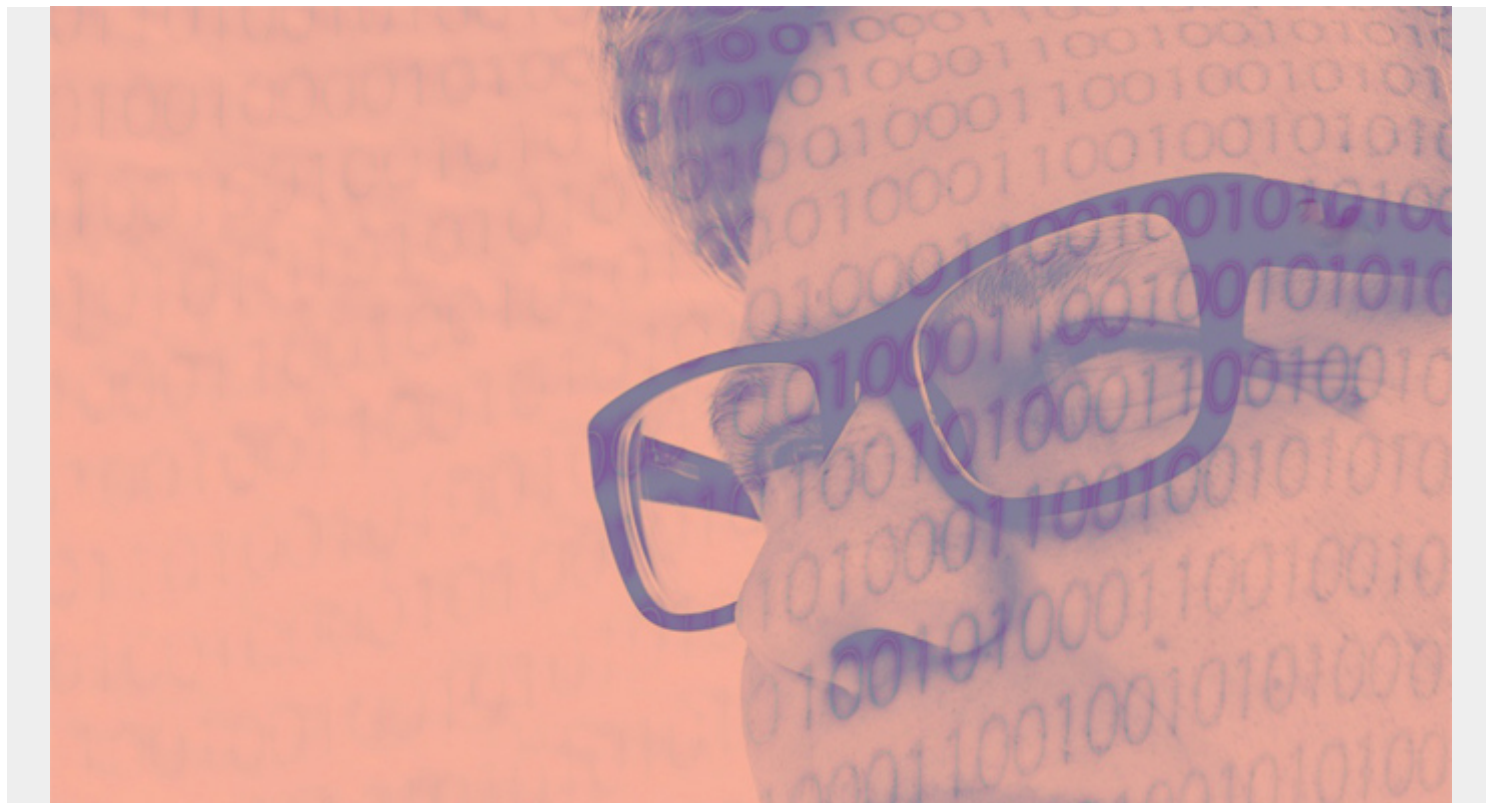


UPDATABLE CATALOG STATISTICS IN DB2 12



(This article is part of our [Db2 Guide](#). Use the right-hand menu to navigate.)

Catalog statistics that updatable and used for access path selection

Table	Statistics
SYSIBM.SYSCOLDIST	CARDF
	COLGROUPCOLNO
	COLVALUE
	FREQUENCYF
	HIGHVALUE
	LOWVALUE
	NUMCOLUMNS
	QUANTILENO
SYSIBM.SYSCOLSTATS	TYPE
	COLCARD
	HIGHKEY
	LOWKEY
SYSIBM.SYSCOLUMNS	PARTITION
	COLCARDF
	HIGH2KEY
	LOW2KEY

	CLUSTERRATIOF
	FIRSTKEYCARDF
SYSIBM.SYSINDEXES	FULLKEYCARDF
	NLEAF
	NLEVELS
	DATAREPEATFACTORF
SYSIBM.SYSINDEXSTATS	DATAREPEATFACTORF
	HIGH2KEY
SYSIBM.SYSKEYTARGETS	LOW2KEY
	STATS_FORMAT
	CARDF
	KEYGROUPKEYNO
	KEYVALUE
	FREQUENCYF
SYSIBM.SYSKEYTGTDIST	HIGHVALUE
	LOWVALUE
	NUMKEYS
	QUANTILENO
	TYPE
	CARDINALITY
	INITIAL_INSTS
SYSIBM.SYSROUTINES	INITIAL_IOS
	INSTS_PER_INVOC
	IOS_PER_INVOC
	CARDF
SYSIBM.SYSTABLES	NPAGES
	NPAGESF
	PCTROWCOMP
SYSIBM.SYSTABLESPACE	NACTIVEF
	CARDF
SYSIBM.SYSTABSTATS	NPAGES

Disclaimer: This Db2® 12 for z/OS Reference Guide was developed to help users in their daily activities in administrating and programming in Db2 for z/OS. There are no guarantees expressed or implied with the contents in this guide. We want to provide a quality and useful reference for users. Please notify us of any mistakes or errors in this reference guide at blogs@bmc.com. Db2 is a registered trademark of the IBM Corporation.