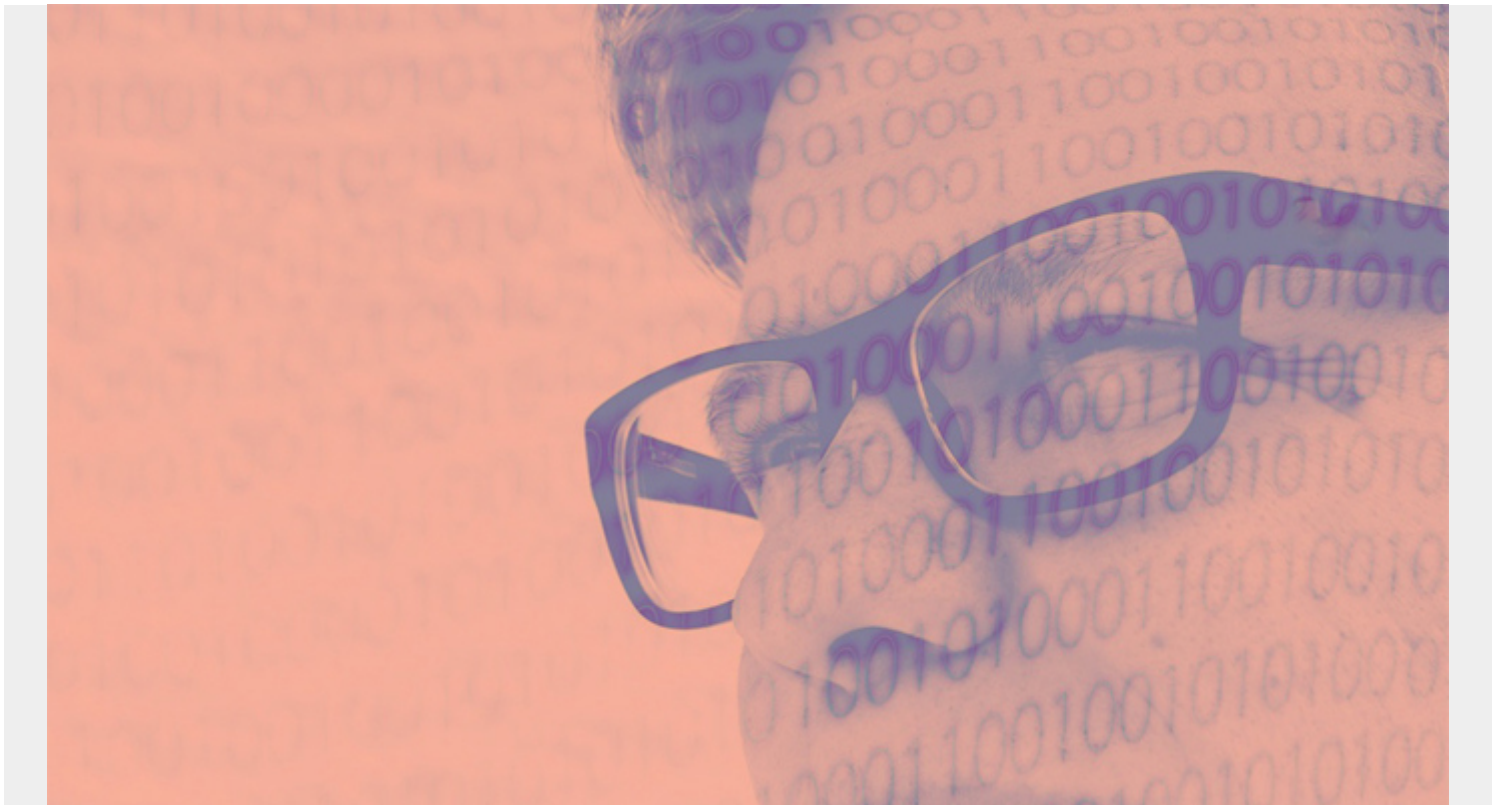


PREDICATES IN DB2 12



(This article is part of our [Db2 Guide](#). Use the right-hand menu to navigate.)

Predicate Type	Indexable	Stage 1
COL = value	Y	Y
COL = noncol expr	Y	Y
COL IS NULL	Y	Y
COL op value	Y	Y
COL op noncol expr	Y	Y
COL BETWEEN value1 AND value2	Y	Y
COL BETWEEN noncol expr1 AND noncol expr2	Y	Y
value BETWEEN COL1 AND COL2	Y	Y
COL BETWEEN COL1 AND COL2	N	N
COL BETWEEN expression1 AND expression2	Y	Y
COL LIKE 'pattern'	Y	Y
COL IN (list)	Y	Y
COL <> value	N	Y
COL <> noncol expr	N	Y
COL IS NOT NULL	Y	Y

COL NOT BETWEEN value1 AND value2	N	Y
COL NOT BETWEEN noncol expr1 AND noncol expr2	N	Y
value NOT BETWEEN COL1 AND COL2	N	N
COL NOT IN(list)	N	Y
COL NOT LIKE 'char'	N	Y
COL LIKE '%char'	N	Y
COL LIKE '_char'	N	Y
COL LIKE host variable	Y	Y
COL LIKE UPPER('pattern')	Y	Y
COL LIKE UPPER(host-variable)	Y	Y
COL LIKE UPPER(global-variable)	Y	Y
COL LIKE UPPER(CAST(host-variable AS data- type))	Y	Y
COL LIKE UPPER(CAST(SQL-variable AS data- type))	Y	Y
COL LIKE UPPER(CAST(global-variable AS data-type))	Y	Y
T1.COL = T2 col expr	Y	Y
T1.COL op T2 col expr	Y	Y
T1.COL <> TC col expr	N	Y
T1.COL1 = T1.COL2	Y	Y
T1.COL1 op T1.COL2	Y	Y
T1.COL1 <> T1.COL2	N	N
COL=(noncor subq)	Y	Y
COL = ANY(noncor subq)	N	Y
COL = ALL(noncor subq)	N	N
COL op (noncor subq)	Y	Y
COL op ANY (noncor subq)	Y	Y
COL op ALL (noncor subq)	Y	Y
COL <> (noncor subq)	N	Y
COL <> ANY (noncor subq)	N	N
COL <> ALL (noncor subq)	N	N
COL IN (noncor subq)	Y	Y
(COL1,...COLn) IN (noncor subq)	Y	Y
COL NOT IN (noncor subq)	N	N
(COL1,...COLn) NOT IN (noncor subq)	N	N
COL = (cor subq)	N	N
COL = ANY(cor subq)	Y	Y

COL = ALL (cor subq)	N	N
COL op (cor subq)	N	N
COL op ANY (cor subq)	N	N
COL op ALL (cor subq)	N	N
COL <> (cor subq)	N	N
COL <> ANY (cor subq)	N	N
COL <> ALL (cor subq)	N	N
COL IN (cor subq)	Y	Y
(COL1,...COLn)IN(cor subq)	N	N
COL NOT IN (cor subq)	N	N
(COL1,...COLn) NOT IN (cor subq)	N	N
COL IS DISTINCT FROM value	N	Y
COL IS NOT DISTINCT FROM value	Y	Y
COL IS DISTINCT FROM noncol expr	N	Y
COL IS NOT DISTINCT FROM noncol expr	Y	Y
T1.COL1 IS DISTINCT FROM T2.COL2	N	N
T1.COL1 IS NOT DISTINCT FROM T2.COL2	Y	Y
T1.COL1 IS DISTINCT FROM T2 col expr	N	Y
T1.COL1 IS NOT DISTINCT FROM T2 col expr	Y	Y
COL IS DISTINCT FROM (noncor subq)	N	Y
COL IS NOT DISTINCT FROM (noncor subq)	Y	Y
COL IS NOT DISTINCT FROM (cor subq)	N	N
SUBSTR(COL, 1, n)=value	Y	Y
SUBSTR(COL, 1, n) op value	Y	Y
DATE(COL) = value	Y	Y
DATE(COL) op value	Y	Y
YEAR(COL) = value	Y	Y
YEAR(COL) op value	Y	Y
EXISTS (subq)	N	N
NOT EXISTS (subq)	N	N
expression = value	N	N
expression <> value	N	N
expression op value	N	N
expression op (subq)	N	N
XMLEXISTS	Y	N
NOT XMLEXISTS	N	N

Disclaimer: This Db2® 12 for z/OS Reference Guide was developed to help users in their daily activities in administrating and programming in Db2 for z/OS. There are no guarantees expressed or implied with the contents in this guide. We want to provide a

quality and useful reference for users. Please notify us of any mistakes or errors in this reference guide at blogs@bmc.com. Db2 is a registered trademark of the IBM Corporation.