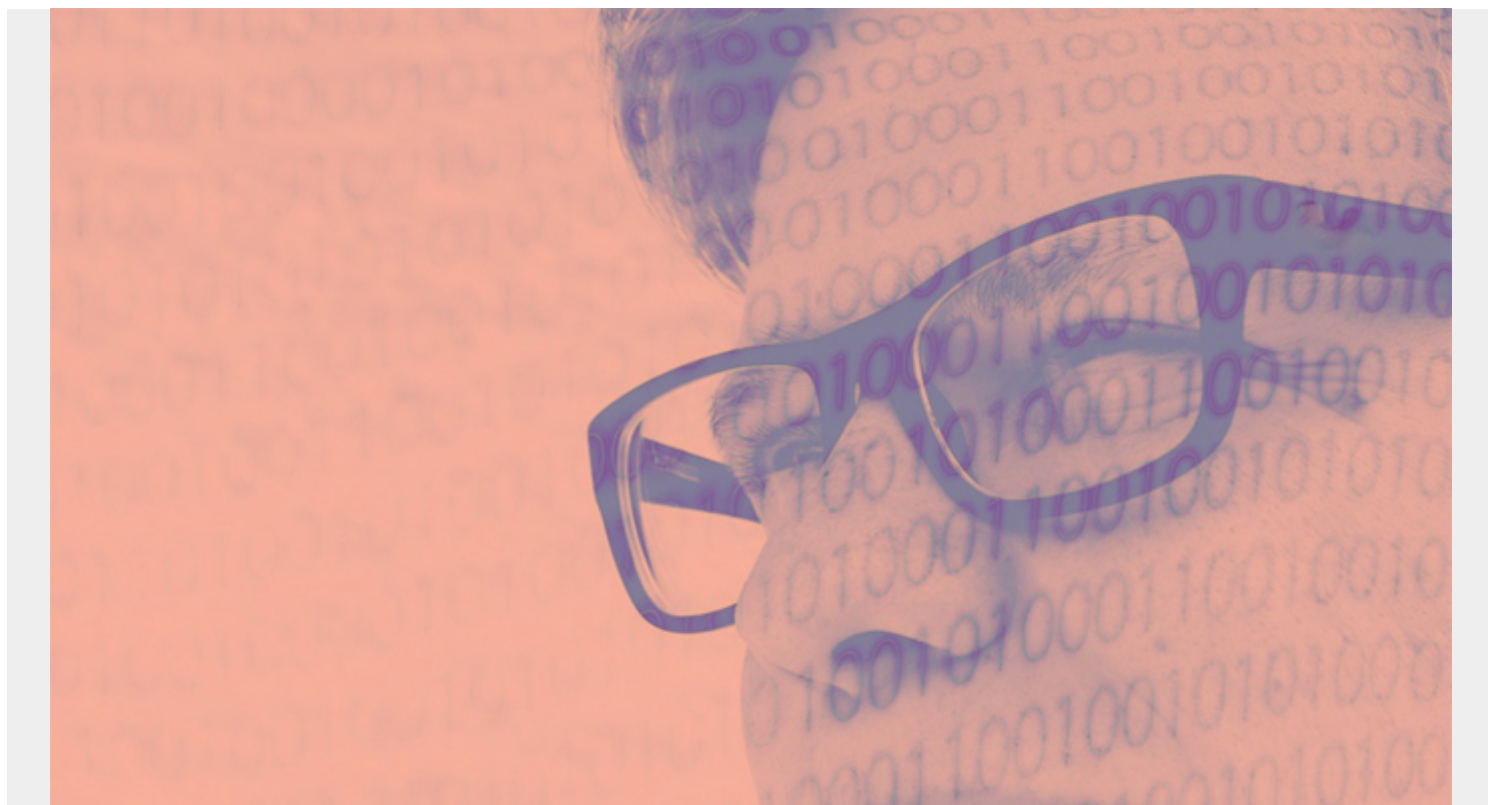


DSNZPARMS IN DB2 12



(This article is part of our [Db2 Guide](#). Use the right-hand menu to navigate.)

Parameter	Description	Acceptable values (defaults appear in bold)	Online
ABEXP	EXPLAIN processing	YES , NO	Yes
ABIND	Auto BIND	YES , NO	Yes
ACCEL	Acceleration Startup	NO , AUTO, COMMAND	No
ACCELMODEL	Enable modelling	NO , YES	Yes
ACCESS_CNTL_MODULE	DB2 access control routine load module	1-8 Char (install), DSNX@XAC (migration)	No
ACCUMACC	DDF/RRSAF accumulation data	NO , 2-65535	Yes
ACCUMUID	Aggregation fields	0 -10	Yes
ADMTPROC	JCL procedure used to start administrative scheduler	1-8, ssnADMT	No
AEXITLIM	Authorization exit limit	0-32676, 10	Yes

AGCCSID	ASCII coded character set (mixed)	0-65533	—
ALTERNATE_CP	Alternate copy pool	Blank, name of copy pool	Yes
AMCCSID	ASCII coded character set (mixed)	0-65533	—
APPENSCH	Application encoding	ASCII, EBCDIC, UNICODE, ccsid	—
APPLCOMPAT	Application compatibility	V10R1, V11R1	Yes
ARCPFX1	Copy 1 prefix	1-34 char	Yes
ARCPFX2	Copy 2 prefix	1-34 char	Yes
ARCRETN	Retention period	0-9999	Yes
ARCWRTC	WTOR route code	1-16, 1,3,4	Yes
ARCW0TR	Write to operator	NO, YES	Yes
ARC2FRST	Read copy 2 archive	NO, YES	Yes
ASCCID	ASCII coded character set (single-byte)	0-65533	—
AUDITST	Audit trace	NO, YES, list, *	No
AUTH	Use protection	YES, NO	No
AUTHCACH	Plan auth cache	0-4096, 1024	Yes
AUTH_COMPATIBILITY	Release Authorization rules	Blank, SELECT_FOR_UNLOAD	Yes
AUTHEXIT_CACHEREFRESH	Authorization cache refresh	ALL, NONE	Yes
AUTHEXIT_CHECK	ID use for authorization checks	PRIMARY, DB2	Yes
BACKODUR	Backout duration	0-255, 5	No
BIF_COMPATIBILITY	Built-in function format	CURRENT V9_DECIMAL_VARCHAR	Yes
BINDNV	Bind new package	BINDADD, BIND	Yes
BLKSIZE	Block size	8192-28672	Yes
BMPTOUT	IMS BMP timeout	1-254; 4	Yes
CACHEDYN	Cache dynamic SQL	NO, YES	Yes
CACHEDYN_STABILIZATION	Allow dynamic statement stabilization	BOTH, CAPTURE, LOAD, NONE	Yes
CACHEPAC	Package authorization cache	0-2MB; 5M	No
CACHERAC	Routine authorization cache	0-2MB; 5M	No
CATALOG	Catalog alias	1-8 char; DSNCAT	Yes

CATDDACL	SMS class for catalog and directory table spaces	Valid SMS class, blank	Yes
CATDMGCL	SMS class for catalog and directory table spaces	Valid SMS class, blank	Yes
CATDSTCL	SMS class for catalog and directory table spaces	Valid SMS class, blank	Yes
CATXDAACL	SMS class for catalog and directory indexes	Valid SMS class, blank	Yes
CATXMGCL	SMS class for catalog and directory indexes	Valid SMS class, blank	Yes
CATXSTCL	SMS class for catalog and directory indexes	Valid SMS class, blank	Yes
CDSSRDEF	Current degree	1 , Any	Yes
CHECK_ FASTREPLICATION	Type of replication used to copy objects	PREFERRED REQUIRED	Yes
CHECK_ SETCHKP	CHECK DATA and CHECK LOB place inconsistent objects in CHECK PENDING	YES, NO	Yes
CHGDC	DROP support	1,2,3	Yes
CHKFREQ	Number of log records created between checkpoints	1000-16000000(CHKTYPE=LOGRECS), NOTUSED, (CHKTYPE=MINUTES), 5 , 99999999 (CHKTYPE=BOTH)	Yes
CHKLOGR	Number of log records created between checkpoints	1000-16000000(CHKTYPE=LOGRECS), NOTUSED , (CHKTYPE=MINUTES), 99999999(CHKTYPE=BOTH)	Yes
CHKMINS	Number of minutes between log checkpoints	LOGRECS, MINUTES , BOTH	Yes
CMTSTAT	DDF threads	ACTIVE , INACTIVE	No
COMPACT	Compact data	NO , YES	Yes
COMPRESS_ DIRLOB	Compress DB2 Directory LOB	NO , YES	Yes
COMPRESS_ SPT01	Compress SPT01 directory table space	YES , NO	Yes
CONDBAT	Max remote connected	0-25000; 64	Yes
COPY_ FASTREPLICATION	Copy fast replication	PREFERRED , REQUIRED, NONE	Yes
CTHREAD	Max users	1-2000; 70	Yes

DBACRVW	DBADM can create view for other authid	YES, NO	Yes
DATE	Date format	ISO , USE, EUR, JIS, LOCAL	—
DATELEN	Local date format	0 , 10-254	—
DB2SUPLD	Serviceability parameter	—	—
DDF	DDF startup option	NO , AUTO, COMMAND	No
DDF_COMPATIBILITY	DDF connection characteristics	Blank , DISABLE_IMPACT_JV, IDNTFY_V12_PRIOR_VER, IGNORE_TZ, SP_PARMS_NJV	Yes
DDL_MATERIALIZATION	When DB2 materialization occurs	1(immediate) , 2(pending)	Yes
DDLTOX	DDL Timeout	1 -254	Yes
DEALLCT	Deallocate period	0 -1439 min, 0-59 sec, NOLIMIT	Yes
DECARTH	Decimal arithmetic	DEC15, DEC31, 15, 31	—
DECDIV3	Minimum divide scale	NO , YES	No
DEF_DECFLOAT_ROUND_MODE	Decfloat rounding mode	ROUND_CEILING, ROUND_DOWN, ROUND_FLOOR, ROUND_HALF_DOWN, ROUND_HALF_EVEN , ROUND_HALF_UP, ROUND_HALF_EVEN	—
DEFAULT_INSERT_ALGORITHM	Default insert algorithm	1(basic), 2(fast)	Yes
DEFLANG	Language default	ASM, C, CPP, COBOL, COB2, IBMCOB , FORTRAN, PL1	—
DEFLTID	Unknown authid	IBMUSER , authid	No
DELIM	String delimiter	DEFAULT , “,”	—
DEL_CFSTRUCTS_ON_RESTART	Delete coupling facility structures on restart	NO , YES	No
DESCSTAT	Describe for static	NO , YES	Yes
DISABLE_EDMRTS	Disable EDM RTS	NO , YES	Yes
DLDFREQ	Level ID update frequency	0-32767, ON	Yes
DLITOUT	DL/I batch timeout	1-254, 6	Yes
DPSEGSZ	Default partition Segsize	0,4,12,..64(multiples of 4), 32	Yes
DSHARE	Data sharing	Yes , No, blank	No
DSMAX	Data set maximum	1-32767; 20000	Yes
DSQLDELI	Dist SQL string delimiter	“,”	—
DSSTIME	Data set stats time	1-1440; 5	Yes

DSCVI	Vary DS control interval	YES, NO	Yes
DYNRULS	Use for dynamic rules	YES, NO	—
EDM_SKELETON_POOL	Minimum size of EDM skeleton pool in KB	5120-2097152, 10240K	Yes
EDMDBDC	EDM BDC cache	5000K -2097152K	Yes
EDMSTMTC	EDM statement cache size	0-1048576K; 113386K	Yes
EDPROP	DROP support	1, 2, 3	Yes
EN_PJSJ	Enable index ANDing	ON, OFF	Yes
ENScheme	Default encoding scheme	EBCDIC , ASCII	—
EVALUNC	Predicate evaluation with UR and RS	YES, NO	Yes
EXTRAREQ	Extra blocks requestor	0- 100	Yes
EXTRASRV	Extra blocks server	0- 100	Yes
EXTSEC	Extended security	NO , YES	Yes
FCCOPYDDN	Default for FCCOPYDDN of FLASHCOPY clause for utilities	Valid DB2 utilities template, HLQ.&DB.&SN.N&DS.D&JU.T&TL	Yes
FLASHCOPY	Default setting for FLASHCOPY for utilities	NO , YES, CONSISTENT	Yes
FLASHCOPY_COPY	FLASHCOPY clause used by default for COPY utility	NO, YES	Yes
FLASHCOPY_LOAD	FLASHCOPY clause used by default for LOAD utility	NO, YES	Yes
FLASHCOPY_PPRC	FLASHCOPY behavior with PPRC	NO, YES	Yes
FLASHCOPY_REBUILD_INDEX	FLASHCOPY clause used by default for REBUILD INDEX utility	NO, YES	Yes
FLASHCOPY_REORG_INDEX	FLASHCOPY clause used by default for REORG INDEX utility	NO, YES	Yes
FLASHCOPY_REORG_TS	FLASHCOPY clause used by default for REORG TABLESPACE utility	NO, YES	Yes
GCCSID	EBCDIC coded character set (graphic byte)	0-65533	—

GET_ACCEL_ARCHIVE	Get Accel Archive	NO , YES	Yes
GRPNAME	Group name	1-8 char, DSNCAT	No
HONOR_KEEPDICTIONARY	Honor KEEPDICTIONARY on LOAD or REORG	YES, NO	Yes
IDAUTH_MODULE	DB2 connection authorization exit routine	1-8 char, DSN3@ATH	No
IDBACK	Max batch connect	1-2000; 40	Yes
IDFORE	Max TSO connect	1-2000, 40	Yes
IDTHTOIN	Idle thread timeout	0-9999	Yes
IDXBPOOL	Default buffer pool for user indexes	BP0 -BPx	Yes
IGNSORTN	Ignore SORTNUM in utilities	YES, NO	Yes
IMMEDWRI	Immediate write	NO , YES, PH1	Yes
IMPDSDEF	Define datasets	YES, NO	Yes
IMPDSIZE	Max DSSIZE for implicit	1,2, 4 ,8,16,32,64	Yes
IMPLICIT_TIMEZONE	Default value for time zone	CURRENT , SESSION, 12:59 to +14:00	—
IMPTKMOD	Trackmod for implicit	YES , NO	Yes
IMPTSMP	Use data compression	YES, NO	Yes
INDEX_CLEANUP_THREADS	Index Cleanup Threads	0-128, 10	Yes
INDEX_MEMORY_CONTROL	Index memory control	AUTO , DISABLE, 10-200000	Yes
INDEX_IO_PARALLELISM	I/O parallelism enable for index insertion I/O	YES , NO	Yes
INLISTP	IN list elements	1-5000; 50	Yes
IRLMAUT	Auto start	YES , NO	No
IRLMPROC	Proc name	IRLMPROC , IRLM procedure name	No
IRLMRWT	Resource timeout	1-3600; 30	No
IRLMSID	Subsystem name	IRLM , IRLM name	No
IRLMSWT	Time to autostart	1-3600; 120	Yes
IX_TB_PART_CONV_EXCLUDE	Exclude trailing columns	NO , YES	Yes
IXQTY	Indexspace default size	0 -4194304	Yes

LBACKOUT	Postpone backward log processing	AUTO , YES, NO	No
LC_CTYPE	Locale LC_CTYPE	Valid locale, 0-50 char	—
LIKE_BLANK_INSIGNIFICANT	Blank significance in LIKE	NO , YES	
LOB_INLINE_LENGTH	Default length for inline LOBs	0-32680	Yes
LRDRTHLD	Long-running reader threshold	0-1439 minutes, 10	Yes
MAINTYPE	Current maintenance types for MQTs	NONE, SYSTEM , USER, ALL	Yes
MATERIALIZE_NODET_SQLTUDF	Materialize non deterministic table func	NO , YES	Yes
MAXSORT_IN_MEMORY	Max in-memory sort size	1000 to value of SRTPOOL	Yes
MAX_CONCURRENT_PKG_OPS	Max automatic bind requests processed simultaneously	10	Yes
MAXARCH	Recording max	10- 1000	No
MAXCONQN	Max queued connections	OFF , ON, 1-19999	Yes
MAXCONQW	Max queued wait time	OFF , ON, 5-3600	Yes
MAXDBAT	Max remote active	0-1999; 64	Yes
MAX_NUM_CUR	Max open cursors	0-99999; 500	Yes
MAX_ST_PROC	Max number of stored procedures	0-99999; 2000	Yes
MAXKEEPD	Max kept dynamic statements	0-65535; 5000	Yes
MAXOFILR	Maximum number of data sets concurrently open for LOB file references	0 to value of MAX USERS, 100	Yes
MAXRBLK	RID pool size	0, 16K-1000000K; 400MB	Yes
MAXRTU	Read tape units	1-99; 2	Yes
MAXTEMPS	Max temp/stage agent	0-214748364	Yes
MAXTEMPS_RID	Max temp storage in work files in RIDs	NONE , NOLIMIT, or 1 to 329166	Yes
MAXTYPE1	Max type 1 inactive	0-MAX REMOTE CON value	Yes
MCCSID	EBCDIC coded character set (mixed byte)	0-65533	—
MEMBNAME	Member name	1-8 char; DSN1	No

MGEXTSZ	Optimize extent sizing	YES, NO	Yes
MINSTOR	Thread management	YES, NO	Yes
MIXED	Mixed data	NO , YES	—
MON	Monitor trace	NO , YES	No
MXDTCACH	Maximum size of memory for data caching	0-512, 20	Yes
NPGTHRSH	Use of index after table growth	0 , -1, n	Yes
NUMLKTS	Locks per table space	0-50000; 2000	Yes
NUMLKUS	Locks per user	0-100000; 10000	Yes
OBJECT_CREATE_FORMAT	Objects created with basic or extended log	BASIC(migration) EXTENDED(install)	Yes
OPT1ROWBLOCK SORT	Block sort operations for OPT FOR 1 ROW	ENABLE, DISABLE	YES
OPTHINTS	Optimization hints	NO , YES	Yes
OTC_LICENSE	Accept terms of one-time change license	YES, NONE	No
OUTBUFF	Output buffer	40k-400MB; 400K	No
PADIX	Pad index by default	YES, NO	Yes
PADNTSTR	Pad null-terminated strings	YES, NO	Yes
PAGESET_PAGENUM	Page set page numbering	ABSOLUTE , RELATIVE	Yes
PARA_EFF	Parallelism efficiency	0-100, 50	Yes
PARAMDEG	Degree of parallelism	0 -no upper limit	Yes
PARAMDEG_DPSI	Deg of parallelism for DPSI	0 -254, DISABLE	Yes
PARAMDEG_UTIL	Deg of parallelism for utilities	0 -32767	Yes
PCLOSEN	R0 switch checkpoints	1-32767; 5	Yes
PCTFREE_UPD	Percent free for update	AUTO, 0 -99	Yes
PCLOSET	R0 switch time	1-32767; 10	Yes
PEER_RECOVERY	Peer recovery	NONE , RECOVER, ASSIST, BOTH	Yes
PKGREL_COMMIT	Package Release Commit	YES , NO	Yes
PLANMGMT	Default plan management policy	OFF, ON, BASIC, EXTENDED	Yes
PLANMGMT_SCOPE	Default plan management scope	ALL, STATIC, DYNAMIC	Yes
POOLINAC	Pool thread timeout	0-9999; 120	Yes

PRIQTY	Primary quantity	Blank , 1-9999999	Yes
PREVENT_ ALTEBTB_ LIMITKEY	Prevent Alter Limitkey	NO , YES	Yes
PREVENT_NEW_ IXCTRL_PART	Prevent Index Part Create	NO , YES	Yes
PROFILE_ AUTOSTART	Profile autostart	NO , YES	No
PROTECT	Archive logs protected with RACF	NO , YES	Yes
PTASKROL	Include accounting traces for parallel tasks	YES , NO	Yes
QUERY_ACCEL_ OPTIONS	Acceleration options	NONE , YES	Yes
QUERY_ ACCELERATION	Default for CURRENT QUERY ACCELERATION special register	NONE , ENABLE, ENABLE_WITHFAILBACK	Yes
QUIESCE	Quiesce period	0-999; 5	Yes
RANDOMATT	DB2 member can be used for randomized group attach	YES , NO	Yes
REALSTORAGE_ MANAGEMENT	Whether DB2 manages real storage	ON, OFF, AUTO	Yes
REC_FAST REPLICATION	Use FLASHCOPY with recover	NONE, PREFERRED , REQUIRED	Yes
RECALL	Recall database	YES , NO	No
RECALLD	Recall delay	0-32767; 120	Yes
REFSHAGE	Current refresh age	0 , ANY	Yes
REMOTE_COPY_ SW_ACCEL	Remote copy sw accel	DISABLE , ENABLE	Yes
RENAMETABLE	Rename table	DISALLOW_DEP_VIEW_SQLTUDF , ALLOW_DEP_VIEW_SQLTUDF	Yes
REORG_DROP_ PBG_PARTS	Remove trailing empty partitions during REORG	DISABLE , ENABLE	Yes
REORG_LIST_ PROCESSING	Default for PARALLEL option on REORG	PARALLEL , SERIAL	Yes
REORG_MAPPING_ DATABASE	Default database for mapping table	Blank , 8 byte character string	Yes

REORG_PART_SORT_NPI	Default for sorting nonpartitioned index during REORG	AUTO , NO, YES	Yes
RESTART	Restart or defer	RESTART , DEFER	—
RESTORE_RECOVER_FROMDUMP	Recovery/restore	YES, NO	Yes
RESTORE_TAPEUNITS	Maximum tape units	NOLIMIT , 1-255	Yes
RESTRICT_ALT_COLD_FOR_DCC	Restrictions during ALTER TABLE ALTER COLUMN if DATA CAPTURE CHANGES is used	NO , YES	Yes
RESYNC	Resync interval	1-99; 2	Yes
RETLWAIT	Retained lock timeout	0 -254	Yes
RETRY_STOPPED_OBJECT	Retry stopped object	NO , YES	No
REVOKE_DEP_PRIVILEGES	Revoked privileges are also revoked from dependents	NO, YES, SQLSTMT	Yes
RGFCOLID	Registration owner	1-8 char, DSNRGCOL	No
RGFDBNAM	Registration database	1-8 char, DSNRGFDB	No
RGFDEDPL	Control all applications	NO , YES	No
RGFDEFLT	Unregistered DDL default	APPL, ACCEPT , REJECT	No
RGFESCP	ART/ORT escape character	Non-alphanumeric char	No
RGFFULLQ	Require full names	YES , NO	No
RGFINSTL	Install DD control support	NO , YES	No
RGFNMORT	OBJT registration table	1-17char; DSN_REGISTER_OBJT	No
RGFNMPRT	APPL registration table	1-17char, DSN_REGISTER_APPL	No
RLF	RLF auto start	NO , YES	No
RLFENABLE	RLF scope	DYNAMIC , STATIC, ALL	No
RLFAUTH	Resource authid	SYSIBM , authid	Yes
RLFERR	RLST access error	NOLIMIT , NORUN, 1-500000	Yes

RLFERRD	Remote dynamic SQL	NOLIMIT, NORUN, 1-500000	Yes
RLFERRSTC	Static SQL	NOLIMIT, NORUN, 1-500000	Yes
RLFERRDSTC	Remote static SQL	NOLIMIT, NORUN, 1-500000	Yes
RLFTBL	RLST name suffix	01, 2 alphanumeric char	Yes
ROUTCDE	WTO route codes	1, 1-14 route codes	No
RRULOCK	U lock for RR/RS	NO, YES	Yes
SCCSID	EBCDIC coded character set (single-byte)	0-65533	—
SECADM1	Security administrator	SECADM, If type is AUTHID then 1-8 characters, if type is ROLE then SQL identifier	Yes
SECADM1_TYPE	Type of security administrator	AUTHID, ROLE	Yes
SECADM1_INPUT_STYLE	Setting passed as hex string or character	CHAR, HEX	Yes
SECADM2	Second security administrator	SECADM, if type is AUTHID then-1-8 characters, if type is ROLE then SQL identifier	Yes
SECADM2_INPUT_STYLE	Setting passed as hex string or character	CHAR, HEX	Yes
SECADM2_TYPE	Type of security administrator	AUTHID, ROLE	Yes
SECQTY	Secondary quantity	Blank (clist calculated), 1-9999999	Yes
SEPARATE_SECURITY	Separate DB2 security administration from system administration	NO, YES	Yes
SIGNON_MODULE			No
SIMULATED_CPU_COUNT	Number of CPUs being simulated	OFF, 1-255	Yes
SIMULATED_CPU_SPEED	Microseconds of execution time for CPU being simulated	OFF, 1-2147483647	Yes
SITETYP	Site type	LOCALSITE, RECOVERYSITE	No
SJTABLES	Number of tables in star join	1-255; 10	Yes
SKIPUNCI	Skip uncommitted inserts	YES, NO	Yes
SMF89	Measured usage pricing	YES, NO	Yes

SMFACCT	SMF accounting	NO, YES(1) , list(1-5,7,8),*	No
SMFCOMP	Compression SMF	OFF , ON	Yes
SMFSTAT	SMF statistics	YES(1,3,4) , NO, list(1-5),*	No
SPT101_INLINE_LENGTH	Max inline length of LOB in SPT101	NOINLINE ,1-32138	Yes
SQLDELI	SQL string delimiter	Default , ' , "	—
SQLLEVEL	Precompiler SQL level	V10R1, V11R1, function-level	Yes
SRTPOOL	Sort pool size	240K-64000K; 10000K	Yes
SSID	Subsystem name	DSN , <i>SSID</i>	—
STARJOIN	Enabling star join	Disable , enable, 1, 2-32768	Yes
STATFDBK_PROFILE	Statistics profile feedback	YES , NO	Yes
STATFDBK_SCOPE	Statistics feedback	ALL , DYNAMIC, NONE, STATIC	Yes
STATHIST	Collect historical statistics	SPACE, NONE , ALL, ACCESSPATH	Yes
STATSINT	Time to write RTS stats	1-1440 min; 30	Yes
STATROLL	Runstats aggregates partition-level statistics	YES, NO	Yes
STATIME	Statistics time	1-1440 min; 1	Yes
STDSQL	Standard SQL language	NO , YES	—
STORMXAB	Max abend count	0 -225	Yes
STORTIME	Timeout value	5-1800 sec; 180	Yes
SUBQ_MIDX	Multiple index access	ENABLE , DISABLE	Yes
SUPERRS	Suppress Logrec recording during soft errors	YES , NO	Yes
SUPPRESS_HNT_SQLCODE_DYN	Suppress SQLCODE for hints	NO , STMT, ALL	Yes
SVOLARC	Single volume	YES, NO	Yes
SYNCVAL	Statistics sync	NO , 0-59	Yes
SYSADM	System admin 1	SYSADM , authid	Yes
SYSADM2	System admin 2	SYSADM , authid	Yes
SYSOPR1	System operator 1	SYSOPR , authid	Yes
SYSOPR2	System operator 2	SYSOPR , authid	Yes
SYSTEM_LEVEL_BACKUPS	System-level backups	YES , NO	Yes
TBSBP8K	Default 8K BP for user data	Any 8K buffer pool, BP8K0	Yes

TBSBP16K	Default 16K BP for user data	Any 16K buffer pool, BP16K0	Yes
TSBBP32K	Default 32K BP for user data	Any 32K buffer pool BP32K0	Yes
TBSBP00L	Default buffer pool for user data	BP0 -BPx	Yes
TBSBPXML	Default buffer pool for XML table spaces	Any 16K bufferpool, BP16K	Yes
TCPALVER	TCP/IP already verified	NO , YES	Yes
TCPKPALV	TCP/IP keep alive	ENABLE , DISABLE, 1-65524	Yes
TEMPLATE_TIME	Template time	UTC , LOCAL	Yes
TIME	Time format	ISO , JIS, USA, EUR, LOCAL	—
TIMELN	Local time length	0, 8-254	—
TRACSTR	Trace auto start	NO , YES (1-3), list (1-9)	No
TRACTBL	Trace size	4K-396K; 64K	No
TRKRSITE	Remote tracker site usage	NO , YES	No
TSQTY	Default allocation for table space	0 -4194304	Yes
TSTAMP	Timestamp archives	NO , YES	Yes
TWOACTV	Number of active copies	2 , 1	No
TWOARCH	Number of archive copies	2 , 1	No
TWOBSDS	Number of BSDSs	YES, NO	No
UGCCSID	Unicode CCSID (graphic)	1208	—
UIFCIDS	Unicode IFCIDS	YES, NO	Yes
UMCCSID	Unicode CCSID (mixed)	1208	—
UNION_COLTNAME_7	Use Version 7 behavior for union results	YES, NO	Yes
UNIT	Device type 1	TAPE , any device	Yes
UNIT2	Device type 2	Device or unit name	Yes
URCHKTH	UR check frequency	0-255, 5	Yes
URLGwth	UR log write check	0K- 1000K	Yes
USCCID	Unicode CCSID (single-byte)	1208	—
UTIL_DBBSG	DB backup stg grp	Blank , SMS-stogroup-name	Yes
UTIL_LGBSG	Log backup stg grp	Blank , SMS-stopgroup-name	Yes

UTIL_HSM_MSGDS_HLQ	HSM message DS HLQ	Blank , <i>data-set-qualifier</i>	Yes
UTIL_TEMP_STORCLAS	Storage class name for shadow data sets	Blank , valid SMS management class name	Yes
UTILS_DUMP_CLASS_NAME	Dump class name	Blank , valid DFSMS dump class name	Yes
UTILITY_OBJECT_CONVERSION	Utility object conversion	BASIC, EXTENDED, NOBASIC, NONE	Yes
UTIMOUT	Utility timeout	1-254; 6	Yes
UTSORTAL	DB2 uses RTS to determine sort work data set sizes	YES , NO	Yes
VOLTDEVT	Temporary unit name	SYSDA , valid name	Yes
WFDBSEP	Declared temporary tables will use work files with non-zero SECQTY	YES , NO	No
WFSTGUSE_AGENT_THRESHOLD	Agent level threshold in work file database	0 -100	Yes
WFSTGUSE_SYSTEM_THRESHOLD	System level threshold in work file database	0 -100	Yes
WLMENV	WLM environment	Valid name (1-18 char)	Yes
XLKUPDT	X lock for searched U/D	YES , NO	Yes
XML_RANDOMIZE_DOCID	Generate XML DOCID values randomly	NO , YES	Yes
XMLVALA	Upper limit for storage for per user for XML values	1-2097152, 204,800	Yes
XMLVALS	Upper limit for system storage for XML values	1-51200, 10240	Yes
ZOSMETRICS	Enables DB2 to gather z/OS metrics	YES , NO	No

Disclaimer: This Db2® 12 for z/OS Reference Guide was developed to help users in their daily activities in administrating and programming in Db2 for z/OS. There are no guarantees expressed or implied with the contents in this guide. We want to provide a quality and useful reference for users. Please notify us of any mistakes or errors in this reference guide at blogs@bmc.com. Db2 is a registered trademark of the IBM Corporation.